

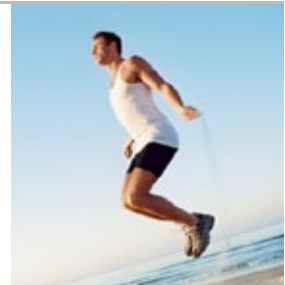


## Pay more attention to your health

### Cardiovascular check-up

How healthy is your lifestyle? Cardiovascular diseases are the most common causes of death in the modern world. Other than a degree of genetic predisposition, the main factors are your lifestyle and your diet. Do you already have any risk factors such as elevated blood pressure? Are there any indications of cardiovascular disease? Take preventive action and investigate potential risk factors in good time.

Laboratory investigation, medical consultation (15 min.) **CHF 224.- / € 166.-**



### Diabetes check-up

Unrecognised and untreated diabetes represents a serious risk for blood vessels and nerves. It can result in cardiovascular diseases, kidney and eye damage as well as dangerous circulatory disorders in the legs and feet. The best way to prevent diabetes and its consequences is to spot the disease or a risk of developing it in good time and apply appropriate measures.

Laboratory investigation, medical consultation (15 min.) **CHF 217.- / € 160.-**



### Osteoporosis check-up

With increasing age, we are prone to the onset of osteoporosis. This is known to affect women in particular but men are also at risk. The result is a serious increase in the risk of fractures, scoliosis and pain. With the aid of an osteodensitometry test you can easily determine your personal risk of suffering from osteoporosis and do a great deal to minimise the risk should you have low bone density values.

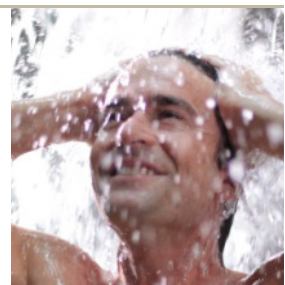
Bone density measurement, medical consultation (15 min.) **CHF 298.- / € 220.-**



### Prostate check-up

Prostate tumours are often only identified when the disease has reached an advanced stage. Doctors recommend a laboratory test between age 50 and 70. The investigation enables early identification of a possible pathological change taking place and the potential risk of prostate cancer. Safeguard yourself with an early check!

Laboratory investigation, medical consultation (15 min.) **CHF 223.- / € 165.-**



To make an appointment or obtain information please contact Reception, call 081 303 38 38 or send an e-mail to [medizin@resortragaz.ch](mailto:medizin@resortragaz.ch).

We will be pleased to advise you personally!

The listed offers are aimed at preventive health care and are not reclaimable from your health insurance fund. Euro exchange rate basis: € 1.- = CHF 1.35. For payments made in euro, the daily exchange rate will apply.